

This i-Size Booster Seat is suitable for  
Children's Height : 100 - 150 cm

# alfi®

## Instruction Manual

High Back Booster Series-ii

Model : CS\_AL-02



Line : @alfibaby

สแกนเพื่อดู  
วิดีโอการติดตั้ง

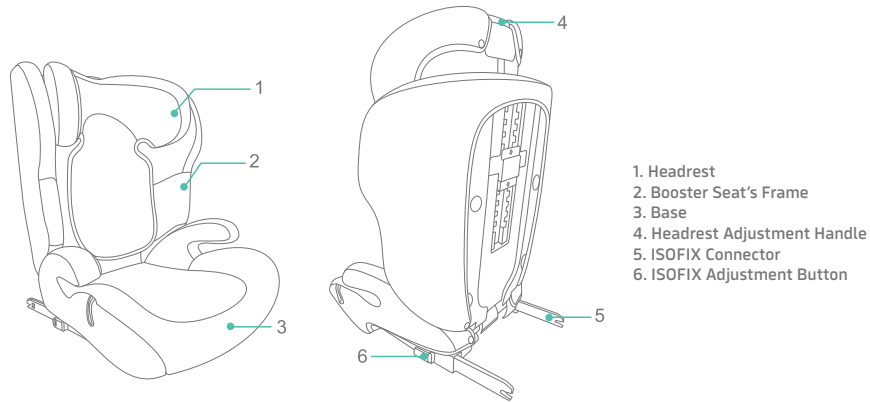
## Notice

This is an i-Size booster seat Enhanced Child Restraint System. It is approved according to UN Regulation No.129, for use primarily in “i-Size seating positions” as indicated by vehicle manufactures in the vehicle user’s manual. If in doubt, consult either the Enhanced Child Restraint System manufacturer or the retailer.

## Contents

1. Composition.....	03-03
2. Safety Instructions.....	04-05
3. Emergency Response.....	06-06
4. Safety Precaution For Installation.....	07-07
5. ISOFIX Installation	
5.1 Find the ISOFIX anchor point.....	08-08
5.2 Adjusting ISOFIX.....	09-09
5.3 Installing and Uninstalling ISOFIX.....	10-10
6. Headrest Adjustment.....	11-11
7. Forward Facing Installation Method.....	12-12
8. Removing the Child Seat Cover.....	13-13
9. Maintenance and Repair.....	14-14
10. Car Seat Care and Preservation.....	15-15
11. Cautions.....	15-15
12. FAQ.....	15-15
13. Quality Assurance.....	16-16

## 1. Composition



Check whether any component is missing. If any component is missing, contact the vendor.

## 2. Safety Instructions

- ◆ The rigid items and plastic parts of an ECRS should be positioned and installed in such a way that they do not become trapped by a movable seat or in a vehicle door during regular use.
- ◆ Ensure that any straps securing the restraint to the vehicle are tight, any support legs are in contact with the vehicle floor, and any straps or impact shields restraining the child are properly adjusted to the child's body without being twisted.
- ◆ Make sure that any lap strap is worn properly.
- ◆ Replace the ECRS if it has been subjected to violent stresses during an accident.
- ◆ Do not make any alterations or additions to the device without approval from the Type Approval Authority, as it can be dangerous. Always follow the installation instructions provided by the ECRS manufacturer closely.
- ◆ Ensure that children are not left unattended in their ECRS.
- ◆ Secure any luggage or other objects that could cause injuries in the event of a collision.
- ◆ The ECRS should not be used without its cover.

- ◆ Ensure that the ECRS cover is not replaced with anything other than the one recommended by the manufacturer, as the cover is an essential part of the restraint's performance.
- ◆ Refer to the vehicle manufacturer's handbook for the use of an "i-Size Enhanced Child Restraint System."
- ◆ Be aware that the child restraint may not fit in all approved vehicles when used for children with a stature above 135 cm.

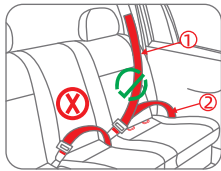
### 3. Emergency Response

- ◆ In case of an emergency, cut the seat belt and remove the child from the scene in a rapid manner.

#### Installation instructions

Size Range	Installation Direction	Installation Method
100 – 150cm	Forward Installation	3-Point Safety Belt
100 – 150cm	Forward Installation	ISOFIX and 3-Point Safety Belt

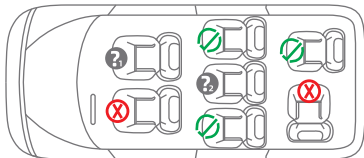
## 4. Safety Precautions For Installation







① Shoulder Belt

② Lap Belt

①+② Combined for 3-Point Safety Belt



-  Correct, suitable for installation.
-  Incorrect, unsuitable for installation.
-  Can not be used in the passenger seat with the airbag activated.
-  3-Point Safety Belt.

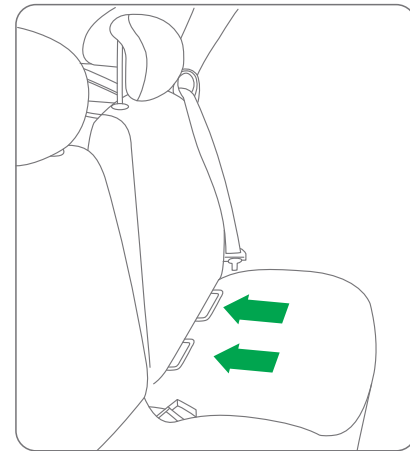
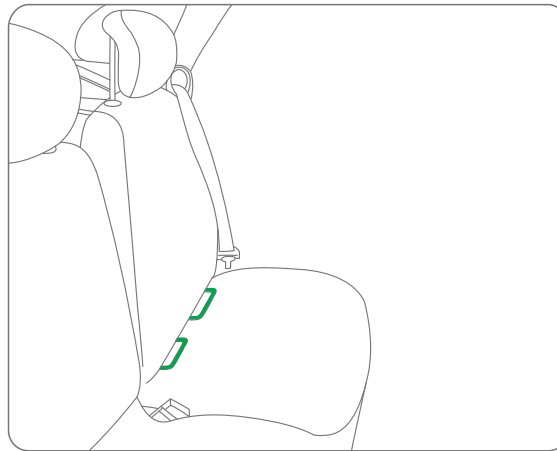



**DANGER**

**▲ WARNING:** Death or serious injury can occur if the airbag is deployed while a child is in the front seat.

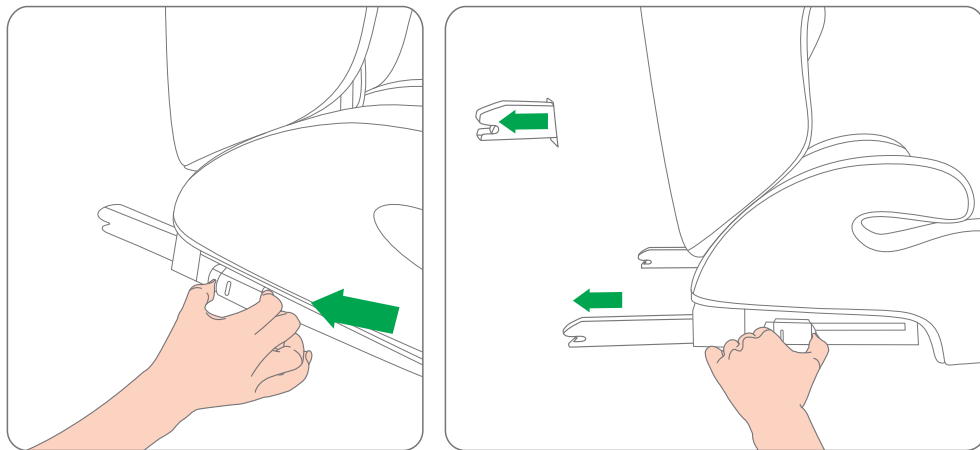
## 5. ISOFIX Installation

### 5.1 Find the ISOFIX anchor point



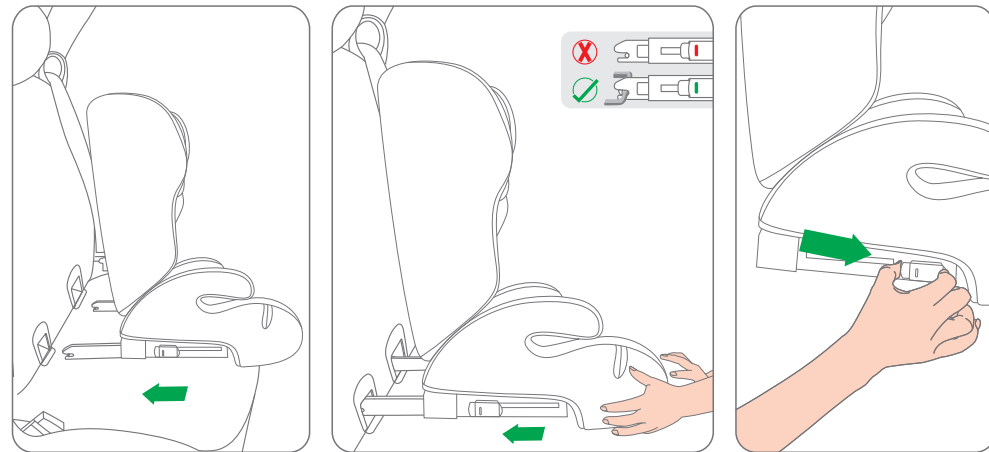
1. Locate the ISOFIX anchor point in the gap between the car seat backrest and the seat, or find it in a designated ISOFIX slot, typically marked with an ISOFIX icon. 

## 5.2 Adjusting ISOFIX



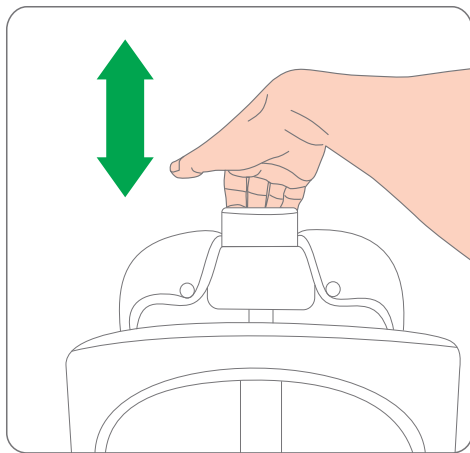
Hold and press the ISOFIX adjustment button at the same time and slide rearward and adjust the ISOFIX to the longest position.

## 5.3 Installing and Uninstalling ISOFIX



1. Insert both ISOFIX connectors into the guide slots and attach them to the car's ISOFIX anchor points.
2. Push the base firmly towards the car seat back until it fits snugly. When the ISOFIX indicator shows green, it confirms proper installation.
3. To remove the ISOFIX, follow the installation steps in reverse.

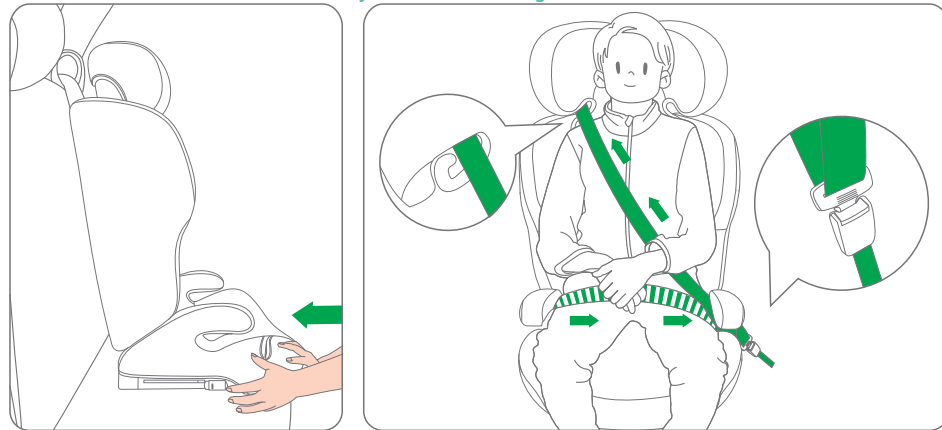
## 6. Headrest Adjustment



1. Adjust the height of the headrest by pressing the adjustment handle while simultaneously moving the handle up or down. There are 11 segments available for headrest adjustment.

## 7. Forward Facing Installation Method

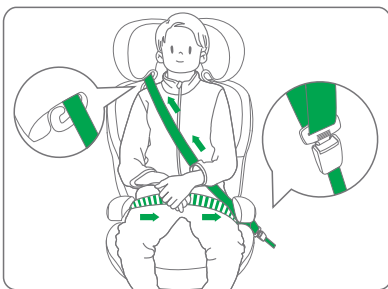
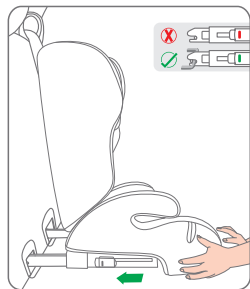
Installation Method ①: 3-Point Safety Belt For Size Range 100 – 150cm



1. Thread the shoulder strap of the car seat belt through the shoulder belt guide hook located under the headrest of the child seat. Then, pass the lap belt through the lap belt guide hooks on both sides of the child seat and fasten the 3-point safety belt buckle. Ensure that the seat belt is not twisted.

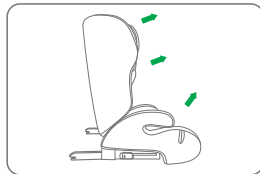
- Tips:**
- a. Ensure the bottom of the headrest is level with or slightly higher than the child's shoulders. If the headrest is between two adjustment positions, use the higher position.
  - b. It is extremely dangerous to use any load-bearing contact points other than those specified in the instructions and marked on the child restraint system.

## Installation Method ②: ISOFIX and 3-Point Safety Belt For Size Range 100-150cm

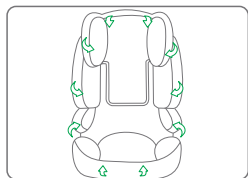


Install your child in the child seat as described in sections 5.3 and 7.

## 8. Removing the Child Seat Cover



Pull the cover according to the direction shown.



After removing the five-point seat belt, remove the head rest and seat cloth cover from the seat.

## 9. Maintenance and Repair

- ◆ Do not iron
- ◆ Lay flat to dry in a cool place.
- ◆ Keep away from direct sunlight to prevent deterioration of the sponge layer.
- ◆ Do not use bleach or dry clean.
- ◆ Wash in water with a temperature below 30 degrees Celsius.
- ◆ Do not twist and dry vigorously, as excessive twisting may cause wrinkles.
- ◆ After removing the small seat support, store it out of the children's reach.
- ◆ Do not use undiluted neutral cleaners, gasoline, or other organic solvents to clean the child restraint system, as these may cause damage.
- ◆ When the child restraint is not in use for an extended period, remove it from the car seat and store it in a cool place out of the reach of children.



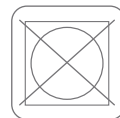
Wash in cold water



Do not bleach



Dry clean  
(all dissolvable  
except trichloroethylene)



Do not  
tumble dry



Do not iron



## 10 .Car Seat Care and Preservation

1. Regularly check to ensure all parts of the seat are complete and in good condition to minimize the risk of accidents.
2. Before use, pull the webbing on the buckle to check if it is secure.
3. Avoid placing the car seat in a cold, hot, or humid environment for prolonged periods.
4. Keep this instruction manual for future reference.
5. For the seat cover, follow the washing instructions sewn onto it.
6. For the seat's frame, wipe it with a damp cloth.

**After an Accident:** Replace the car seat after a severe collision or accident, or contact the dealer or manufacturer if you encounter any issues.

◆ In order to avoid the risk of suffocation, please store the plastic packaging out of the reach of children. In order to protect the environment, if you no longer use this product, please recycle different materials in accordance with the local regulations.

## 12 . FAQ

- ◆ If you have any questions, please contact your local distributor. Make sure you have obtained the following information:
1. The model and seat type of the car used to install the child car seat.
  2. Your child's height, age and weight.

## 13. Quality Assurance

### Product Warranty and Conditions

We guarantee that this product is manufactured according to current installation standards and quality requirements in Europe. The product is free from any material and manufacturing defects at the time of purchase and has undergone various quality tests during manufacturing. If, despite these checks, you find material or manufacturing defects (under normal use and compliance with the instruction manual), we will honor the warranty. In such cases, please contact your dealer.

### Warranty Conditions

The warranty will be void under the following circumstances:

1. The product is used for purposes other than those described in the Instruction Manual.
2. The product has been repaired by a dealer not authorized by our company.
3. The product is bought from a dealer or importer who cannot provide the original purchase receipt.
4. The product has been repaired by a third party or a manufacturer not authorized by us.
5. The defect is caused by improper use, maintenance negligence, or collision damage to the car seat cover and shell, etc.
6. Normal wear and tear or breakage of some parts due to daily use (including rotating and moving parts, etc.).
7. The warranty is valid only for the first buyer and is not transferable.